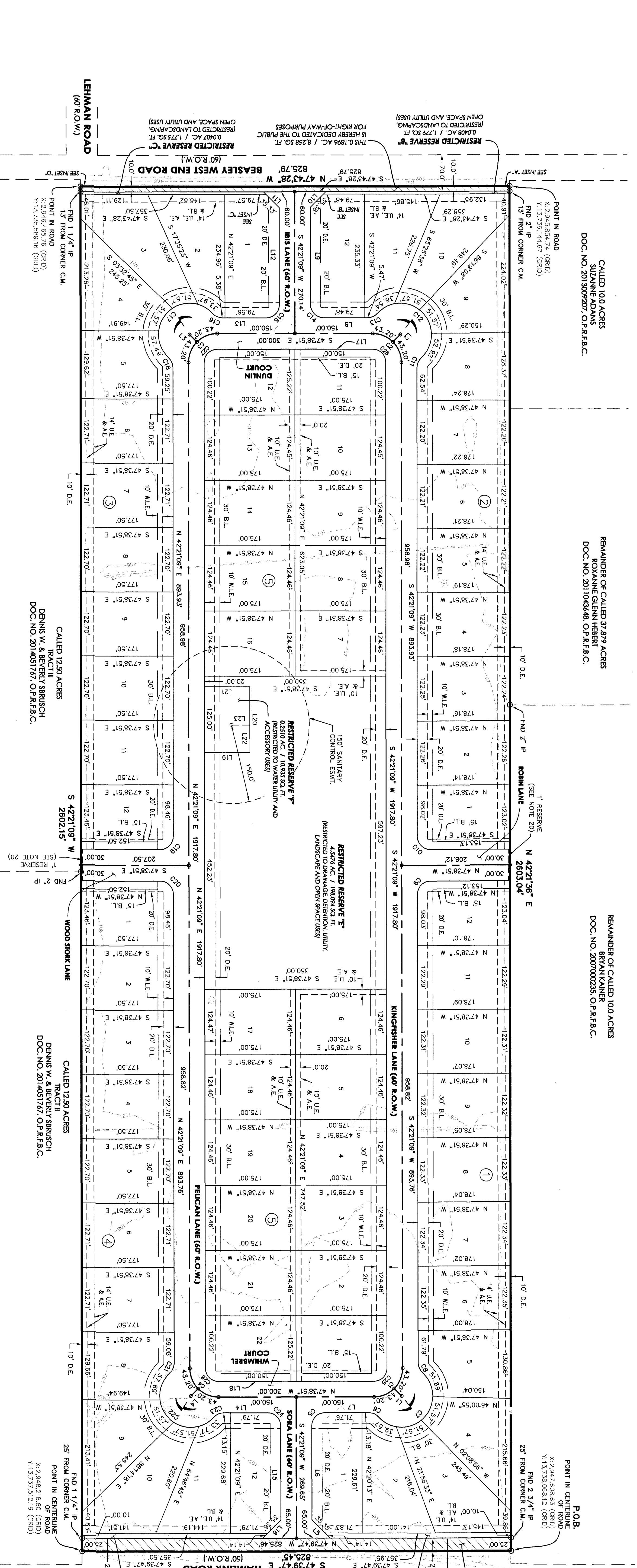
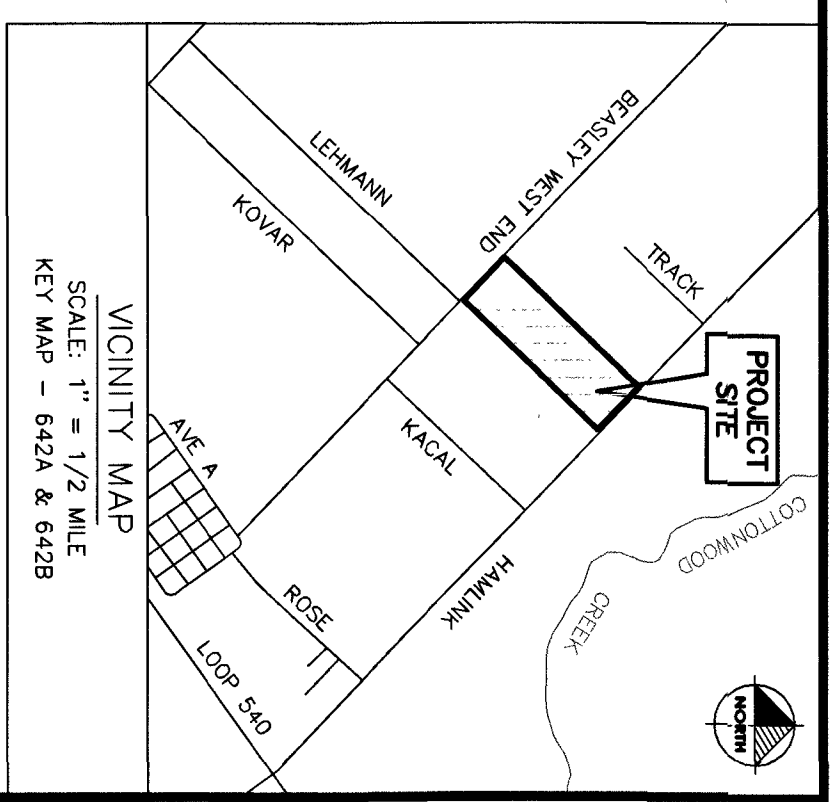
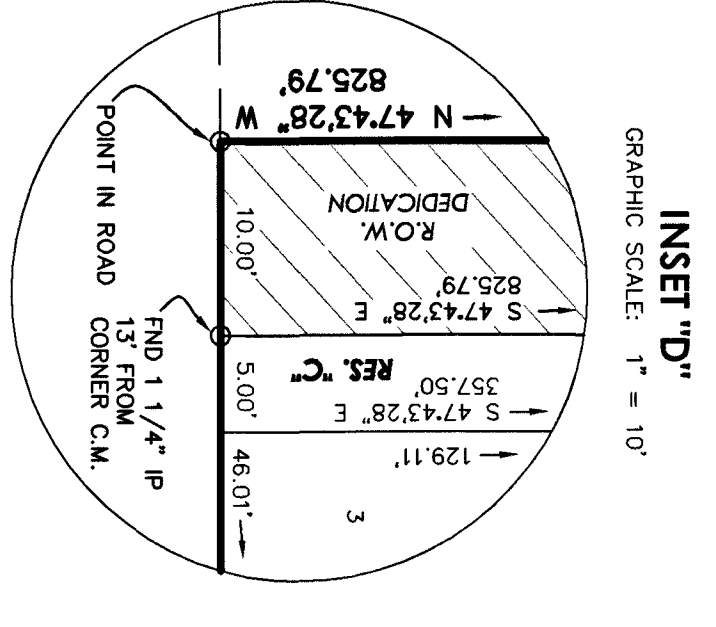
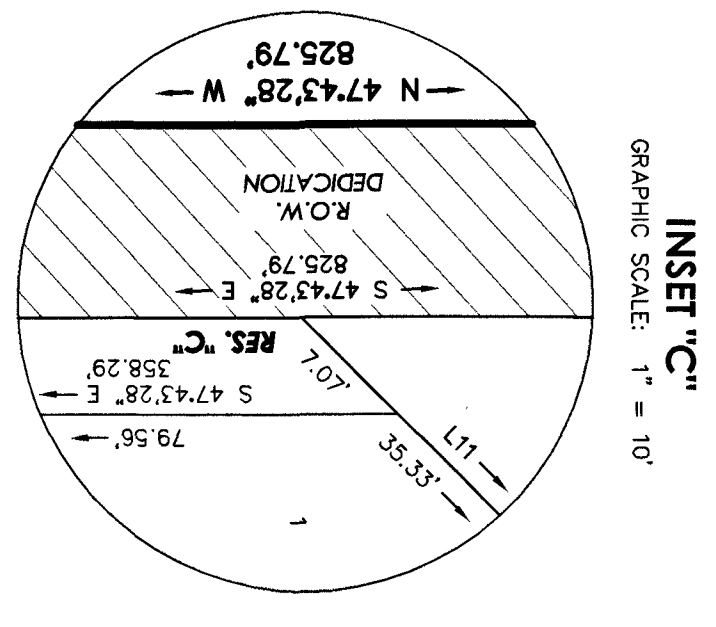
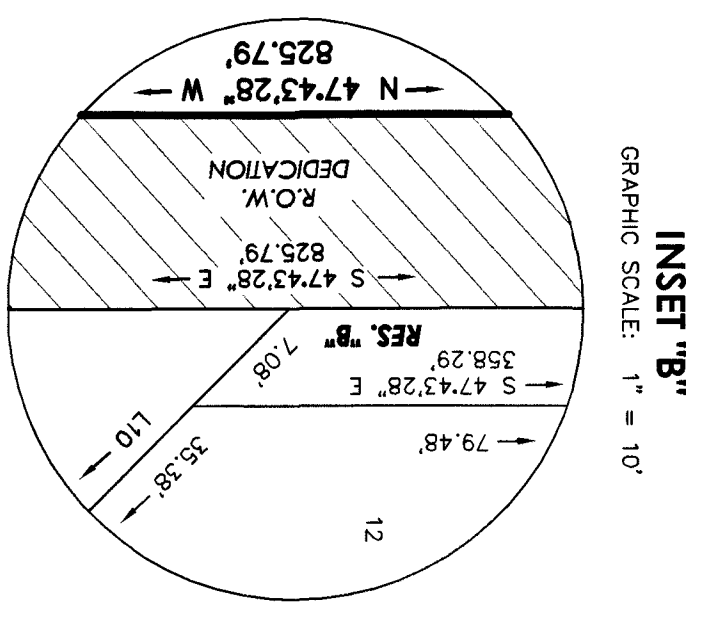
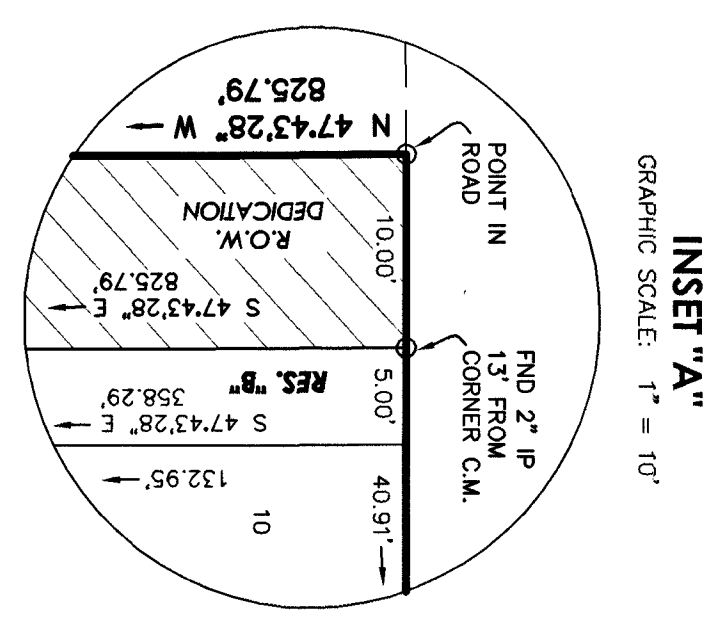


GRAPHIC SCALE: 1" = 100'
0 100 200 Feet



LOT AREA TABLES

BLOCK	LOT	SQ.FT.	A.C.
1	1	21,780	0.5000
1	2	21,780	0.5000
1	3	21,780	0.5000
1	4	21,780	0.5000
1	5	21,780	0.5000
1	6	21,780	0.5000
1	7	21,780	0.5000
1	8	21,780	0.5000
1	9	21,780	0.5000
1	10	21,780	0.5000
1	11	21,780	0.5000
1	12	21,780	0.5000

CURVE TABLE

CURVE	RADIUS	ARC LENGTH	CHORD LENGTH	CHORD BEARING	DELTA ANGLE
C1	55.00	84.39	77.78	S 67°21'09" W	90°00'00"
C2	55.00	84.39	77.78	S 67°21'09" W	90°00'00"
C3	55.00	84.39	77.78	S 67°21'09" W	90°00'00"
C4	55.00	84.39	77.78	S 67°21'09" W	90°00'00"
C5	55.00	84.39	77.78	S 67°21'09" W	90°00'00"
C6	55.00	84.39	77.78	S 67°21'09" W	90°00'00"
C7	55.00	84.39	77.78	S 67°21'09" W	90°00'00"
C8	55.00	84.39	77.78	S 67°21'09" W	90°00'00"
C9	55.00	84.39	77.78	S 67°21'09" W	90°00'00"
C10	55.00	84.39	77.78	S 67°21'09" W	90°00'00"
C11	55.00	84.39	77.78	S 67°21'09" W	90°00'00"
C12	55.00	84.39	77.78	S 67°21'09" W	90°00'00"
C13	55.00	84.39	77.78	S 67°21'09" W	90°00'00"
C14	55.00	84.39	77.78	S 67°21'09" W	90°00'00"
C15	55.00	84.39	77.78	S 67°21'09" W	90°00'00"
C16	55.00	84.39	77.78	S 67°21'09" W	90°00'00"
C17	55.00	84.39	77.78	S 67°21'09" W	90°00'00"
C18	55.00	84.39	77.78	S 67°21'09" W	90°00'00"
C19	55.00	84.39	77.78	S 67°21'09" W	90°00'00"
C20	55.00	84.39	77.78	S 67°21'09" W	90°00'00"
C21	55.00	84.39	77.78	S 67°21'09" W	90°00'00"
C22	55.00	84.39	77.78	S 67°21'09" W	90°00'00"
C23	55.00	84.39	77.78	S 67°21'09" W	90°00'00"
C24	55.00	84.39	77.78	S 67°21'09" W	90°00'00"
C25	55.00	84.39	77.78	S 67°21'09" W	90°00'00"
C26	55.00	84.39	77.78	S 67°21'09" W	90°00'00"
C27	55.00	84.39	77.78	S 67°21'09" W	90°00'00"
C28	55.00	84.39	77.78	S 67°21'09" W	90°00'00"

LINE TABLE

LINE	BEARING	DISTANCE
L1	N 02°38'51" W	20.00'
L2	S 67°21'09" W	20.00'
L3	N 02°38'51" W	20.00'
L4	N 02°38'51" W	20.00'
L5	S 67°21'09" W	20.00'
L6	N 02°38'51" W	20.00'
L7	S 67°21'09" W	20.00'
L8	N 02°38'51" W	20.00'
L9	S 67°21'09" W	20.00'
L10	N 02°38'51" W	20.00'
L11	S 67°21'09" W	20.00'
L12	N 02°38'51" W	20.00'
L13	S 67°21'09" W	20.00'
L14	N 02°38'51" W	20.00'
L15	S 67°21'09" W	20.00'
L16	N 02°38'51" W	20.00'
L17	S 67°21'09" W	20.00'
L18	N 02°38'51" W	20.00'
L19	S 67°21'09" W	20.00'
L20	N 02°38'51" W	20.00'
L21	S 67°21'09" W	20.00'
L22	N 02°38'51" W	20.00'
L23	S 67°21'09" W	20.00'

PARK LAND DEDICATION TABLE

RESTRICTED RESERVE	ACREAGE APPLIED TO PARK LAND DEDICATION (ACRES)
RESTRICTED RESERVE "A"	0.0810
RESTRICTED RESERVE "B"	0.0408
RESTRICTED RESERVE "C"	0.0407
RESTRICTED RESERVE "D"	0.0809
RESTRICTED RESERVE "E"	0.0809
RESTRICTED RESERVE "F"	0.0809
RESTRICTED RESERVE "G"	0.0809
RESTRICTED RESERVE "H"	0.0809
RESTRICTED RESERVE "I"	0.0809
RESTRICTED RESERVE "J"	0.0809
RESTRICTED RESERVE "K"	0.0809
RESTRICTED RESERVE "L"	0.0809
RESTRICTED RESERVE "M"	0.0809
RESTRICTED RESERVE "N"	0.0809
RESTRICTED RESERVE "O"	0.0809
RESTRICTED RESERVE "P"	0.0809
RESTRICTED RESERVE "Q"	0.0809
RESTRICTED RESERVE "R"	0.0809
RESTRICTED RESERVE "S"	0.0809
RESTRICTED RESERVE "T"	0.0809
RESTRICTED RESERVE "U"	0.0809
RESTRICTED RESERVE "V"	0.0809
RESTRICTED RESERVE "W"	0.0809
RESTRICTED RESERVE "X"	0.0809
RESTRICTED RESERVE "Y"	0.0809
RESTRICTED RESERVE "Z"	0.0809
TOTAL	1.3805

BLUE HERON ESTATES

A SUBDIVISION OF 50.00 AC. / 2,180,178 SQ. FT., SITUATED IN THE LE CROSS SURVEY, ASSTRAC NO. 417, BEING ALL OF LOTS 1, 2, 3, 4 AND 5, BLOCK 35, BEASLEY TOWNSHIP ORCHARD GARDEN TRACTS, RECORDED IN VOL. 2, PG. 1178 C.M.R., CITY OF ROSHARON, TEXAS, FORT BEND COUNTY, TEXAS.

Owners
BEASLEY COMMUNITIES, LLC
Texas Limited liability company
21110 North Summly Circle
Key, Texas 77449
(713) 571-1180

Surveyor
GRULLER SURVEYING, LLC
Texas Limited liability company
1244 N. Post Oak Rd., Suite 200
Houston, TX 77055
(713) 353-1444

APRIL 5, 2022



Dawn R. Gruller
Surveyor
Fort Bend County, Texas
July 26, 2022 04:05:16 PM
FEE: \$5800.00 DP2
20220171

FILED AND RECORDED
OFFICIAL PUBLIC RECORDS
FORT BEND COUNTY, TEXAS

Prepared by
BEACON
LAND SERVICES
5301 Katy Freeway, Suite 100
Houston, TX 77056
(713) 94-0280